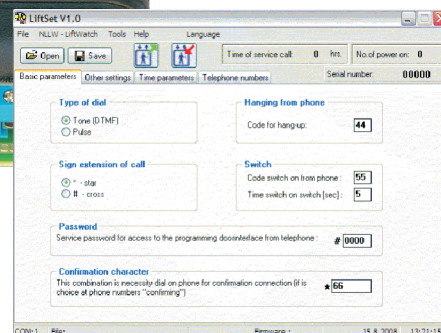


Link Lift Watch



Comply to EN 8128 standard

Automatic operation over PSTN network

Automatic re-dialling up to 6 phone numbers

Hands free communication

Powered by analogue line

2 inputs and 1 relay output

Programming by PC or DTMF (remotely)

Machine room communication

Link Lift Watch

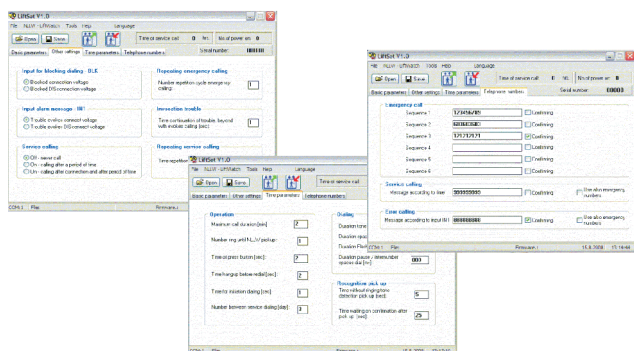
Link Lift Watch provides communication between lift cabin and hotline service (first aid) via PSTN network. After pressing the Alarm button on the control panel in the lift cabin the Link Lift Watch automatically dial up preprogrammed number (up to 6) and establish connection with hotline service (first aid).

The Link Lift Watch can be programmed by PC.

The Link Lift Watch also allows you communication to machine room via LLW Prepoj unit.

Benefits

- The unit is powered from line only (you connect line and button only!).
- The unit includes acoustic part (micro and speaker) – compact solution! The loudness of micro as same as speaker is adjustable independently.
- It is integrated anti-interference as same as protection against static electricity.
- Programming is either remotely by phone (DTMF tones) or by PC (serial port RS232 or USB with convertor to RS232).
- It includes switchable relay contact. You can control remotely by phone. You can use it for remote control of the lift (RESET). The time of relay closing is adjustable from 1 to 99 seconds.
- It includes indication light (LED) – yellow, indication of dialling the number.
- It includes indication light (LED) – green, indication – connection was made.
- The time of button activation is adjustable from 0,5 sec to 5 sec.
- The possibility of activation via third wire from "LLW PREPOJ" for communication with machine room.
- Security against disusing of alarm buttons (activation during failure 5–24V).
- It includes universal input which you can use for failure announcement (doors, power supply, etc.) You can program special phone number.
- All inputs as same as outputs are galvanically isolated – not depends on polarity. (Except button and third wire for machine room).
- Acoustic as same as optical signalling of LLW status.
- The possibility to program 6 numbers (16 digits – includes *, #, Pause, Flash) with note if you want use confirmation or not. The numbers are progressively dial.
- Regular automatic control of system functionality (automatic calling to preprogrammed numbers in set time period from 1 to 10 days).



Models

Voice

- Link Lift Watch 1 lift

Specifications

Link Lift Watch

Operating position: various

Operating conditions

Temperature: +5 °C ÷ +40 °C,

Humidity: 10÷80 % at 30 °C

Power supply

Powered via analogue line

External signalling

LED or bulbs 12V (24V) max. 100 mA

Relays contacts

2×24 V / 100 mA

Dimensions

Basic unit: 110 × 78 × 52 mm

LLW Prepoj: 71 × 34 × 61 mm

Accessories

Options

LLW Prepoj

- The LLW Prepoj has been designed as accessory for Link Lift Watch. It is designed for communication between lift cabin and machine room. It is install in machine room.

Call centrum software

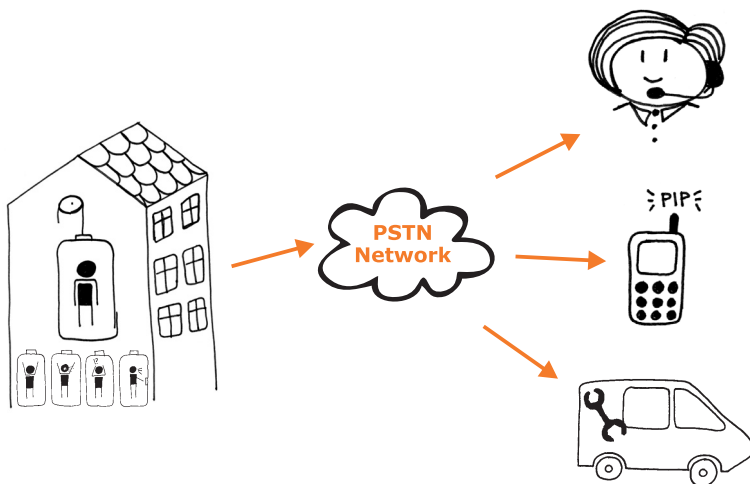
- The Alpha lift software is database software designed for collection Of calls (emergency, service, error) and SMS from lift cabin (GSM Lift Watch, Link Lift Watch). It also provides language support (Alphalanguage sw), reports generation (Alphareport). The programmes Alphalift and Alphareport are network programmes and they share the database.

Alpha Floor Talker

- The Alpha Floor Talker is designed for announcement OF floor numbers when the lift cabin stops.
- Serial or Parallel (most often used formats) connection to the BUS
- Floors announcement, lift cabin movement, doors movement, overweight etc.
- Possibility to built up the message in PC and record to Alpha Talker via USB
- The announcement can contents ring, advertisement, etc.
- Language support – two simultaneous languages – mix possibility (for example Czech and English)
- setting Of loudness, external speaker connection

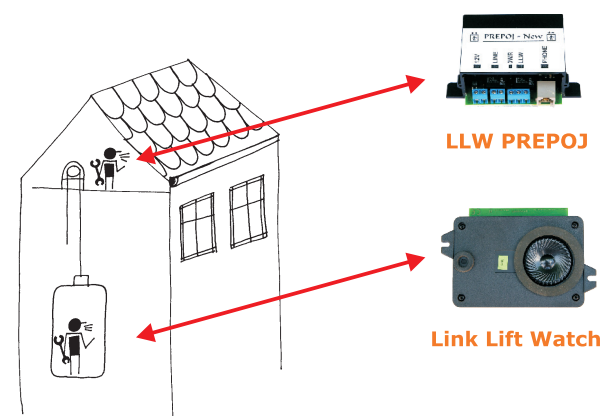
Connectivity Options

Emergency call use



Connectivity Options

Machine room use



Distributed by: